

Newsletter N°1 04/10/2024

REGISTRATION OF YOUR MINI-COMPANY

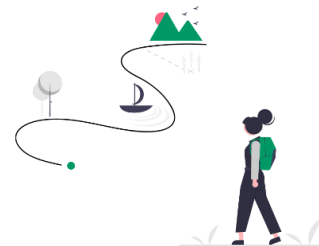
All mini-companies must be registered before **11 October** by following the procedure that you can find:

- Via the teacher's access: [HERE](#)
- Via the student's access: [HERE](#)

Reminder password for students: **practice**

The registration of mini-companies is done by filling out an Excel file (see attached document). The file should be sent to baustert@jel.lu

The **DreamShaper** platform will be available after the registration of mini-companies, as it needs to be configured for each school. **Please inform me in advance if you want the platform in ENGLISH rather than in French.**



Note:

1. If your mini-company does not have a name yet, register it under a provisional name (e.g., High School XY Mini A) and change it later via DreamShaper.
2. If students have not yet been allocated to groups/mini-companies by 11 October, please send us their names and e-mail addresses anyway. We need this information for DreamShaper and to be able to send out information via this newsletter.
3. This year, **mini-companies no longer need to pay the registration fee** at the start of their project (the fee is paid by our partner BIL).

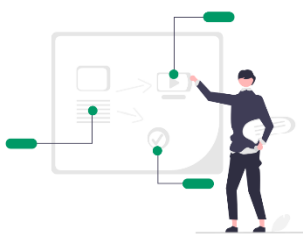
MINI-COMPANY CALENDAR

The provisional mini-business calendar is now available

- Via access for teachers: [HERE](#)
- Via access for students: [HERE](#)

Note: For organisational reasons, Jonk Entrepreneuren Luxembourg reserves the right to change the dates of the calendar during the year. **Please note: Some dates have already changed compared to the first version!**

COACHING



Do not hesitate to contact us now if you need a coach/external advisor for your company. We have several motivated volunteers who wish to get involved in the program, and the earlier the coaches are involved in the process, the better it will be!

More information [HERE](#)

SPEED COACHING

Groups that need a little more help in developing an idea or who simply want to have initial feedback can also participate in our first speed coaching session. Several coaches with different expertise will be present.

• Friday, **25 October, 2024**, from **4:00 pm to 6:00 pm** at **House of Entrepreneurship**

Register [HERE](#) (one registration per mini-company, different time slots to choose from)

As places are limited, we operate on a first-come, first-served basis!

SOCIAL BUSINESS INCUBATOR

On **21 October 2024** from **16:00 to 17:30** we are offering a “**Social Entrepreneurship**” training at the [Social Business Incubator](#) for all mini-companies that want to carry out a project with a **positive social impact**. After the training, there is also a possibility to receive additional coaching and support from the Social Business Incubator.



Register [HERE](#)

For a better understanding of societal impact companies, please refer to the ‘Impact Luxembourg’ brochure: <https://economie-sociale-solidaire.public.lu/fr/publications/2023/impactluxembourg-sis.html>

One registration per person! As places are limited, we're working on a first-come, first-served basis!



SuperDrecksKëscht is also available to assist with any questions regarding waste management/recycling of materials. Feel free to contact akademie@sdk.lu.

FOOD SAFETY TRAINING

All mini-companies wishing to market a **food product** (also recommended for cosmetic products) are **obliged to take a training course with HORESCA** to avoid any subsequent problems with their sales (use of labels, product naming, correct display of ingredients, packaging, manufacturing, hygiene, etc.).

This training will take place in mid-November. Details will follow in the next newsletter.

OPENING OF A BANK ACCOUNT

Once again, BIL Bank is offering mini-enterprises the opportunity to open a bank account if they for their commercial activity.

The deadline for **applying for a bank account** is **24 October 2024** (no applications will be accepted after this date!). Once this documentation submitted, **attendance at a training course on the subject of managing a bank account is compulsory**. This training will take place on **3 December 2024** at BIL's head office. After this the mini-enterprise account is operational!

The procedure to follow is available [HERE](#) (password reminder: practice).

Note: you can of course open a bank account with another bank or look for another way to manage your finances. **Think about whether you really need a bank account for your business before you apply!**

FOR ANY OTHER QUESTIONS, FEEL FREE TO REACH OUT TO US

Questions about the implementation of the program at school	Questions about the platform, events, trainings, coaching
Pitt Schneider Program Coordinator	Myriam Baustert Program Coordinator
pitt.schneider@education.lu	baustert@jonk-entrepreneuren.lu Tel. : 26 11 01 – 22 Mobile : 661 819 671